

REPLACEMENT COMPONENTS



No Holes Base
425-5639



Vertical Tube Assembly
1 Tube &
1 Telescoping Rod
425-5342



Articulated
Swing Arm
425-1188



Hex Key
425-3379



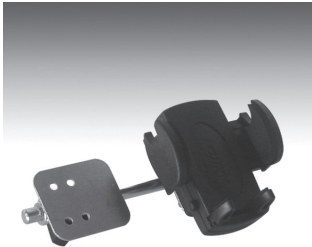
(2) Hex Head
Cap Screws &
(2) Lock Washers
425-3385



Ratchet
Handle
425-1273

JOTTO DESK ACCESSORIES

Specifications subject to change without notice



PIVOTING CELL PHONE HOLDER

Model 425-5299

Allows you to tilt your phone independent of the desktop angle. Mounts to side of 10" x 12" Desktop.



USB LIGHT

Model 425-2490

12" flexible wand with blue LED's and rheostat to adjust brightness. Three foot power cord plugs into cigarette lighter.



KENSINGTON® MASTERLOCK®

Model 425-1317

Computer securing system uses Kensington locking system. Fasten security cable to permanent structure in vehicle.



BRACE KIT

Model 425-5238

The Brace Kit attaches to the stand providing additional support. It can be adjusted in length and mounts to flat, vertical or angled surfaces.



GLO-WRITER™

Model 425-3500

Illuminating quick-note pad. Hand held for convenience. Illuminates in Red or Amber. Removable mounting options. Jot notes down, day or night... anywhere!



SCREEN SUPPORT

Model 425-5999

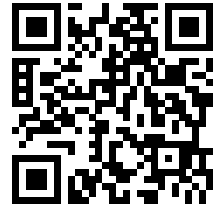
The Screen Support is designed to keep your screen in place while you use your computer. It attaches directly to the desk and adjusts in height and tilt angle.

'15+ FORD F-150
Computer Mount - No Holes
425-5632



**ONLY
WORKS WITH
40/20/40 SEAT
CONFIGURATION**

*PLEASE CHECK ALL BOX
FLAPS AND INSERTS
FOR PARTS STORED
UNDERNEATH BEFORE
DISCARDING BOX.
THANK YOU.*



Video Installation

WARNING: Do not install or use this product in any manner which would interfere with any of the vehicles controls, air bags or safety devices. Follow vehicle owner's manual instructions should a dash warning light come on after installation of this desk. Do not install or use this product in any manner which causes a safety hazard for vehicle and/or occupants.

To avoid serious injury do not place this desk or any objects between the air bags and yourself or any passengers. If necessary remove the desk before driving. Store in trunk or other safe place.

**We recommend that you do not work on the Jotto Desk while driving!
Park safely, then use. Remember, driving safely comes first.**

WARNING: Make sure of and check on a regular basis that all knobs, fastening devices and handles are tight and secure. Repair or replace any faulty or worn parts. All equipment, such as computers, printers, phones, etc. must be safely secured when vehicle is in motion.

DISCLAIMER: The manufacturer of this product may not be held liable for any accidents, injuries or problems caused by the use or installation of this product.

Specifications subject to change without notice.

Jotto Desk® is a patented product and registered trademark of Assembled Products® Corporation
425-5632/1 09/15

jottodesk.com
toll free 1.877.455.6886

INSTALLATION PROCEDURE

READ INSTRUCTIONS BEFORE BEGINNING INSTALLATION

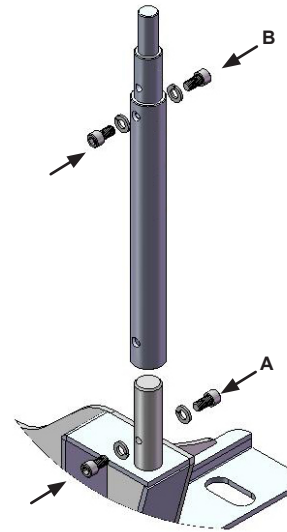


1. Use a small flathead screwdriver to remove front and rear plastic caps from passenger side seat. This exposes bolts of seat rail.
2. Remove front and rear OEM bolts from seat rail using a 13mm socket.
3. Lean passenger seat backwards to access and disconnect wire harness under seat. Set passenger seat and bolts aside.
4. Remove front plastic OEM trim from passenger seat rail nearest transmission hump, by using T20 bit to remove (2) small

screws. Set aside OEM trim and screws.

5. Remove (3) OEM bolts from passenger side of center seat, and (2) OEM bolts from driver side of center seat using 13mm socket. Set center seat and bolts aside.
6. Loosen 18mm OEM bolts on D/S and P/S front OEM brackets for center seat. Slide fork of base under P/S of OEM bracket and bolt and spacer under D/S of OEM bracket and bolt. Tighten OEM bolts.
7. Replace center seat back into vehicle and secure into position with previously removed (5) OEM bolts.
8. Replace passenger seat over top of base keeping hole alignment on front hole next to transmission hump. Replace and tighten OEM bolts at this time. Replace plastic caps.
9. Assemble the desktop stand to the mount base, starting with the vertical tube. Use 2 Hex Head Cap Screws and 2 Lock Washers to secure vertical tube to mount post.
10. Place articulated swing arm over the 5/8" end of the telescoping rod. Tighten with ratchet handle.
11. Attach desktop to end of articulated swing arm and secure by tightening ratchet handle.

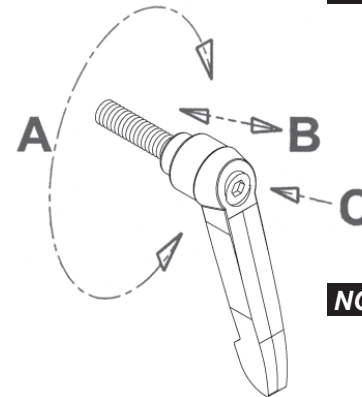
STAND ASSEMBLY OPERATION



1. Remove Hex Head Cap Screws from stand assembly and place tube over the No-Holes Mount Base.
2. Thread (2) Hex Head Cap Screws with (2) Lock Washers through tube and into front and rear of No Holes Mount post at bottom of tube. (A)
3. Raise inner rod to desired height. Thread (2) Hex Head Cap Screws with (2) Lock Washers into front and rear holes at top of tube. (B)
4. Use provided Hex Key to tighten (4) Hex Head Cap Screws to ensure secure positioning.

RATCHET CLAMP OPERATION

NOTE: Insert the ratchet handle through the unthreaded side of the articulated swing arm and tighten. Going through threaded side first will not allow the arm to tighten properly



To adjust, pull handle out (B) and rotate counter clockwise (A), release and tighten. If needed, use 1/8" hex head wrench for adjustment (C)

NOTE: Ratchet handles are spring loaded and can be readjusted to tighten.